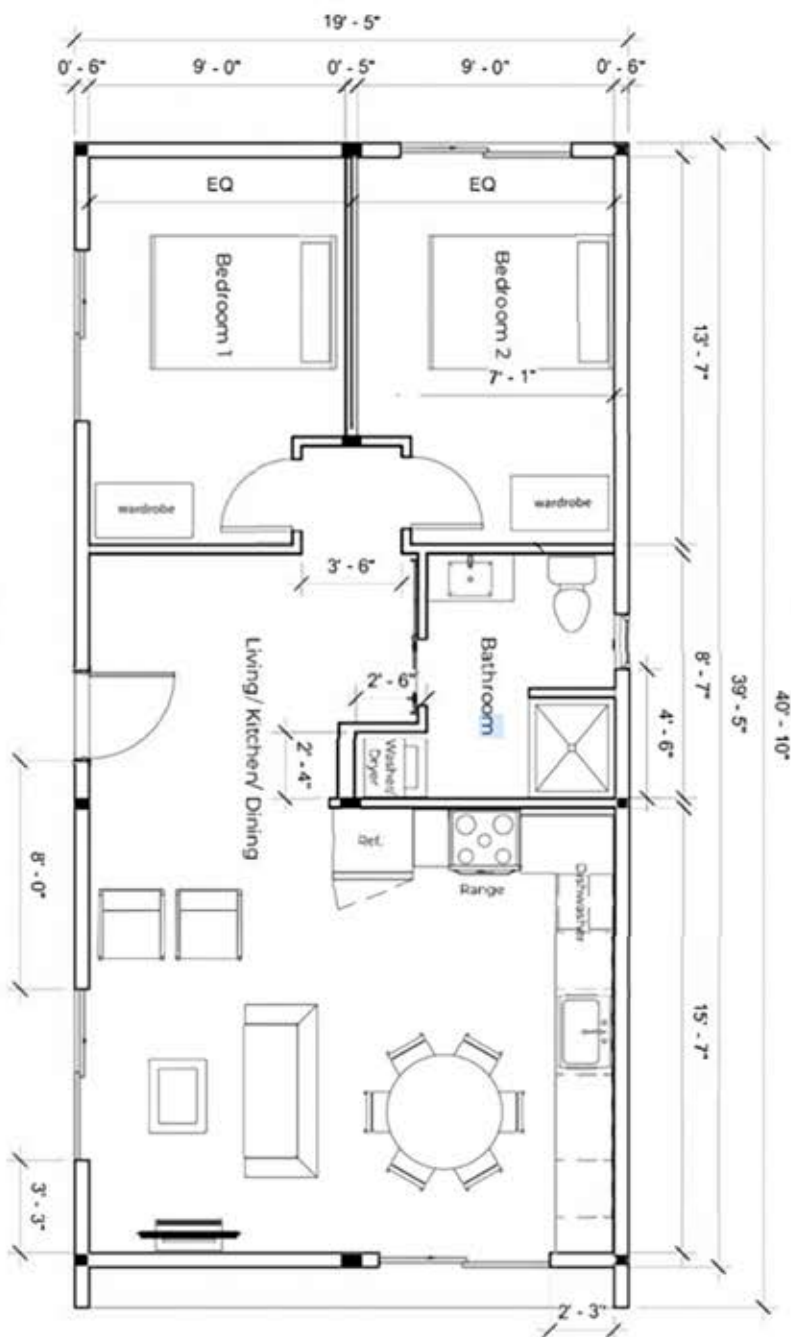


The AS750

2-BEDROOM · 750 SQ FT



The **AS750** is our flagship two-bedroom residence, thoughtfully designed for small families, downsizing homeowners, or young professionals seeking a high-quality, affordable living solution. The open-concept layout creates a bright and welcoming living space, with a spacious kitchen and living area ideal for everyday comfort or casual entertaining. The unit features a full-size kitchen complete with modern appliances. When installed with an optional 2.3 kW solar system, the AS750 qualifies under California's Net Zero Energy requirements for new residential construction. Solar system not included.